

NEWMOON TRADING & CONTRACTING LLC

Prequalification Document

Telephone : +974 44632180

Fax : +974 44645831

Email : info@newmoonqatar.com

Website : www.newmoonqatar.com



# PREQUALIFICATION DOCUMENTS

## NEWMOON TRADING & CONTRACTING LLC



PROJECT:QATAR GAS TOWER : YEAR-2017



PROJECT:THE PEARL QATAR : YEAR-2016



PROJECT: MOI, QATAR ; YEAR-2015



PROJECT: LMH, QATAR ; YEAR-2015



  
Director

# INDEX

## ❑COMPANY PROFILE

- INTRODUCTION
- ORGANISATION CHART
- ISO & APPLICATOR CERTIFICATE
- WATERPROOFING
- SWIMMING POOLS
- MOOVWALL – PARTITION WALL
- INTERIOR & PAINTING DIVISION
- MEP
- TRADING
- LOCATION MAP
- PROJECT REFERENCES
- ON GOING PROJECT
- COMPLETED PROJECTS

## ❑COMPANY DOCUMENTS

- COMMERCIAL REGISTRATION CERTIFICATE
- ISO CERTIFICATE

## ❑QUALITY MANUAL

## ❑HSE MANUAL



نيومون للتجارة المقاولات ل.د.س  
**NEWMOON**  
TRADING & CONTRACTING L.L.C

AN ISO 9001 : 2008 CERTIFIED COMPANY



## COMPANY PROFILE



# INDEX

- INTRODUCTION
- ORGANISATION CHART
- ISO & APPLICATOR CERTIFICATE
- WATERPROOFING
- SWIMMING POOLS
- MOOVWALL – PARTITION WALL
- INTERIOR & PAINTING DIVISION
- MEP
- TRADING
- LOCATION MAP
- PROJECT REFERENCESS
- ON GOING PROJECTS
- COMPLETED PROJECTS



## INTRODUCTION

Newmoon Trading & Contracting LLC, focused and specialized in waterproofing, coatings , swimming pools and concrete repairs. Since from the inception, we were delivering best results to our clients through our innovative methodologies and performance based advance systems.

We are on a mission to maintain and improve the standard quality norms in our services by accomplishing the assignments within the schedule by adopting the modern and sustainable industry practices at competitive terms with ultimate customer satisfaction.

- Providing the best service and quality workmanship at cost-effective prices.
- Maintaining a well-trained and motivated staff compliment to ensure consistency.
- Maintaining integrity and transparency in dealing with our customers and staff.
- Professionally and prudently managing our resources to ensure stability.
- Providing career opportunities to young people through training and exposure.
- Employing sound business acumen to remain ahead of our competitors.
- Using innovation and research to arrive at the best and cost effective solutions.
- Safe environment and ensuring safety of our employees and the public at large.

We preside and are committed to the following values:

- Honesty and integrity
- Urgency, proficiency and tenacity in carrying out our business
- Project delivery and reliability
- Innovation and creativity
- Liberating the best in our people
- Long-lasting and cost effective solutions
- Intellectual and professional leadership
- Quality assurance
- Occupational health and public safety



نيومون للتجارة والمقاولات ل.م.س

**NEWMOON**  
TRADING & CONTRACTING LLC

AN ISO 9001 : 2008 CERTIFIED COMPANY

As specialist flooring contractors we endeavour to provide total one stop service in construction of new works, maintenance of existing infrastructure, as well as improvement/additions to or alterations of infrastructure. Some of the applications and core areas of our expertise are given below.

## Epoxy Coating

To Industrial applications

Factory floors

Car Parks

Water Tanks

Food Processing Units

Garages

Walk Ways

## Water Proofing

Roof Water proofing

Substructure Water proofing

Water Tanks

Reservoirs

## Swimming Pools

Design & Construction

Annual Maintenance

## Landscaping

Design & Consultation

Ornamental Plants

Herbal Plants

Orchids

## Acoustic Movable Partitions

Design, Manufacture, Supply  
Installation

## Manufacturers





نيومون للتجارة والمقاولات ل.د.م.س

**NEWMOON**  
TRADING & CONTRACTING L.L.C

AN ISO 9001 : 2008 CERTIFIED COMPANY

Certificado . Sertifika . प्रमाण पत्र . Zertifikat . شهادة



**NEW MOON TRADING & CONTRACTING W.L.L.**

Building No.1, Room No.17, Zone 90,  
Sheikh Abdul Rahman Bin Jassim Street,  
Opp. Commerical Bank, Al Wakra, Qatar

This certificate verifies that the above Organisation has been audited on the above address for scope as under and found to be in accordance with the requirements of Management system.

## **ISO 9001:2008**

### **Quality Management System**

**Interior Design, Fit-outs & Movable Partitions,  
Water Proofing, Construction & Maintenance of  
Swimming Pools, Coating including Painting & Epoxy**

Certificate No: **Q-02160229**

Original Issue Date: **29 Feb 2016**

Issue Date: **29 Feb 2016**

1<sup>st</sup> Surv. Due before: **15 Jan 2017\***

2<sup>nd</sup> Surv. Due before: **15 Jan 2018\***

Valid Till: **14 Sep 2018**

\* After successful completion of surveillance audit, new certificate shall be issued.

This Certificate is valid as per Rules and Regulations of ECL & also the surveillance audits conducted atleast once a year.  
To check the certification validity please contact -[info@theeci.com](mailto:info@theeci.com)



Director

**Equalitas Certifications Limited**

Accreditation by Joint Accreditation System of Australia and New Zealand (Accreditation No. M4410210II) FECCA House, 4 Phipps Close, Deakin, ACT 2600, Australia

Rev: 15

[www.theeci.com](http://www.theeci.com)

**CERTIFICATE OF REGISTRATION**





نيومون للتجارة المقاولات ل.ل.س  
**NEWMOON**  
TRADING & CONTRACTING L.L.C

AN ISO 9001 : 2008 CERTIFIED COMPANY



*Waterproofing*





## Crystallization Waterproofing

We provide Crystallization Waterproofing solutions using **XYPEX** crystalline products. This coating is applied through brush / spray which is applied for achieving waterproofing as well as for protection of concrete. Having a cement base, these are supplied in powder form and are formulated using fine quartz sand, active chemicals and Portland cement. Further, the chemicals require presence of water in capillaries for penetrating as well as forming sealing crystals.



### Features:

- Brush / Spray applied
- Special active Crystalline chemicals help in penetrating as well as becoming integral with concrete and is not easily damaged
- Tolerate water, thus substrate are not required for drying out before application
- Can be applied to damp surfaces as well as surfaces with water including even against high water pressure
- Crystalline slurry can be applied to inside / outside surfaces so that it provides total protection to concrete
- In case of wall developing shrinkage cracks, unique qualities of Crystalline material help in reacting with moisture for sealing off leakages even in event of high water pressure

### Areas of Application:

- Basements (Substructures)
- Water Tanks (UG Tank & OH Tank) & Chemical Tanks
- Bathrooms & Balconies (Wet Areas)
- Swimming pools & pool decks
- Planter Boxes & Canopies
- RCC Roof Terrace
- Sumps
- Sunken Slabs
- Marine structures





## Bituminous Membrane Waterproofing

We provide bituminous waterproofing membrane treatment using a unique range of bituminous waterproofing membranes from international brands. The main properties are it is not water soluble, non-biodegradable, not classified as carcinogenic and does not release harmful toxins. It also helps in protecting insulation and can reflect harmful sun rays.

## SBS Membrane Waterproofing

Being an industry leader, we offer a broad range of SBS Membrane Waterproofing Treatments that widely finds its application for substructures, tiled roof, RCC roof, aluminum sheet roof / gutters, basement, AC sheet roof / gutters and roof gardens. Various advantages of our range of services include fast & easy application, does not brake and resistance to weather, roots and fungus.



## APP Membrane Waterproofing Treatment

APP Membrane Waterproofing solutions offered comprises of industry known bituminous roofing membranes along with polyester reinforcement / fiberglass reinforcement as carrier, APP, APAO as modifier. It also uses covering insulation materials like sands, polyethylene foil or minerals slated etc and thus provide a superior performance.

## EPDM Membrane Waterproofing

EPDM is a world-recognized popular waterproofing material and with the best performance among high polymer waterproof materials, EPDM is of exceptional elasticity and will not split or crack under normal building movement.



## Cementitious Waterproofing

Cementitious Waterproofing is a two component flexible acrylic polymer cementitious waterproofing coating that is mixed on site and resurfaced on concrete and cement plaster. Cementitious Waterproofing has excellent weathering resistance and crack bridging property.





# Waterproofing

## Elastomeric Waterproofing

Our **Elastomeric Waterproofing** treatments are designed to provide superior waterproofing support and deliver high performance in given end usage areas. These elastomeric acrylic based water proofing coatings are made available with anti fungal as well as crack bridging ability which are recommended for providing desired protection of exterior cementitious surface areas. Some of the areas where these are suitable include RCC Structure, Masonry Walls, Sloping / Flat Roofs, Cooling Tower, Bridges etc.



## Polyurethane Waterproofing

Our **Polyurethane membrane waterproof** treatment uses materials made of macro molecule materials such as Polyurethane, high strength polypropylene non-wovens, black master batches, anti-aging agent, etc. The Polyurethane fiber waterproof membrane uses Polyurethane waterproofing layer as middle layer, strong bonding layers as up-down side layers. It has the features like innocuous, insipidity, non-pollution, high tensile strength, strong impermeability, good softness, small liner expansion coefficient, uniform surface roughness, large friction coefficient and light weight.



## Epoxy Waterproofing

**Epoxy Water Proofing** Treatment uses a two component Epoxy resin based waterproofing compound. One part is consisting of epoxy resin and the other part with curing agent. After mixing both the parts it can be thinned down with water. It possesses all the attributes of normal solvent based epoxy compositions such as excellent water and chemical resistance, adhesion, hardness, toughness and mechanical strength. One of the major advantage of water based Epoxy over solvent based Epoxy is that it can be applied on damp surface also. Being free from solvents, it does not pose any health hazards or fire hazards. It is completely safe, convenient & economical to apply.



## Industrial Flooring Coating

Our **Flooring Coating** is based on latest technology support and comprises polyurethane self leveling and chemical resistant epoxy resin floor coatings. Some of the reasons of their usage include availability in range of colors, attractive floor finish, superior chemical resistance as well as withstanding foot as well as vehicular traffic. Further, these are also used for providing chemical & abrasion resistant floor finish as well as for slip resistant coating in wet areas.



## Epoxy Coatings

**Epoxy Coatings** offered comprise an extensive range of coatings that are precision developed using support of our dedicated professionals that ensures in these high functional values. Being cost effective in usage, these are used extensively for providing clean as well as pleasant look to work stations as well as for shopping arcades and residential complexes. Our well defined quality management procedures ensure defined guidelines are well incorporated so as to deliver superior Epoxy Flooring & Coating solutions to the customers



## Heat Reflective Coatings

**Heat Reflective Coatings** offered comprise a wide range including summer cool roof / wall coating. It is used in areas like exterior RCC surface & facades, sloppy roofs form sheds, warehouses as well as godowns, plastic & cement water storage tanks, metals as well as on asbestos sheets. The services offered also cover areas including those having slightly damp surface. Also providing ultra violet resistance so as to achieve outstanding durability standards, these are micro-porous and made available in attractive light shades.



## Anti Rust Coating

We are engaged in providing high performance anti corrosive coatings viz coal tar epoxy coating, which are epoxy based and graft polymer plastic paints and play a very important role in fighting corrosion and erosion. These anti corrosive coating are having anti algae & anti moss effect also.



## Anti Corrosion Coating

Our **Anti Corrosion Coating** solutions find application in varied areas including in concrete water tanks, concrete reinforcement bars as well as mild steel structures. Our rich industry experience as well as support of experienced professionals also allows us to offer competitive bonding agent services to so as to perfectly match up with emerging demands of the customers. We also ensure these services are offered at competitive prices.





## Approved applicators for





نيومون للتجارة والمقاولات ل.د.م.س

**NEWMOON**

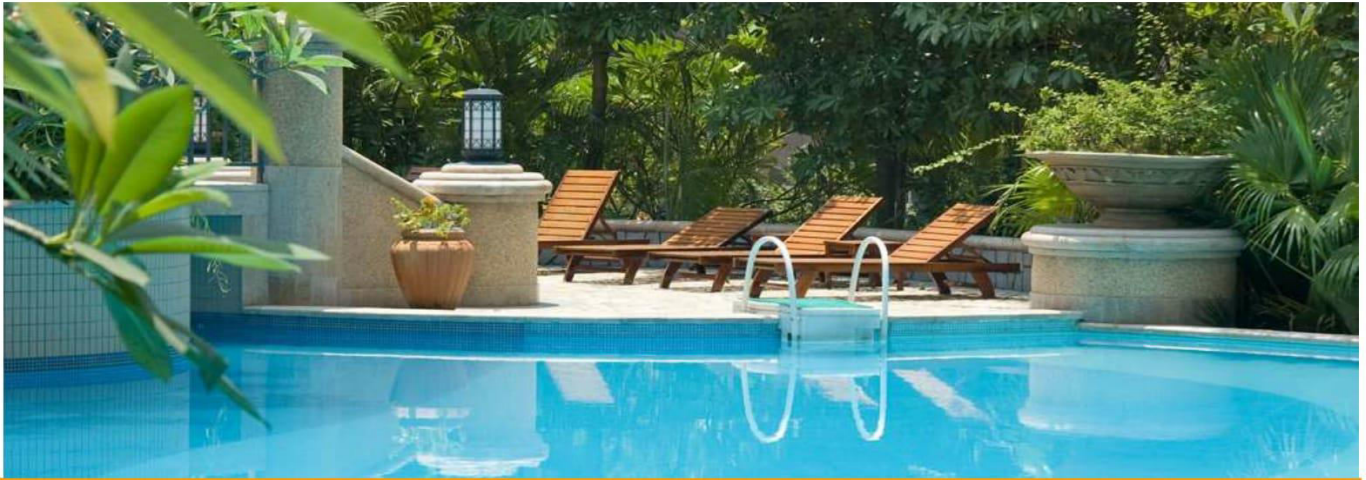
TRADING & CONTRACTING L.L.C

AN ISO 9001 - 2008 CERTIFIED COMPANY

## *Swimming Pool Division*







## Welcome to Newmoon Pools



Newmoon pools are an emerging brand in swimming pool installation as well as maintenance in the state of Qatar. For over 7 years, Newmoon, has been Qatar's answer to affordable, dependable and professional quality oriented services. We specialize in customization as well as personalization in the installation of swimming pools, to offer unique features, competitive rates, and the most comprehensive service in the area.

On a hot summer day, it will be a pleasure to spend some time in your swimming pool with

an ever memorable experience with your family or friends, in a relaxation mood or in an exercise appetite; we offer you a comprehensive package, in harmony with the rhythm of your mind....Your conceptions on perfections.

We steps in to the pool in association with Moothedan Pools, where we have been focusing on developing better technologies by international technical partnerships.



## Basic Features

**In-situ Permanent active casing panels** which makes the construction of swimming pool easy and fast so that the completion time can be even within 35 days on excavation to finish basis.

**The revolutionary Compact Filtration System** which provides crystalline pure water up to 5 microns. (The most ideal option for small and medium size pools)

**The Reinforced PVC Liner** which provides perfect waterproofing combined with aesthetics and long life (10 years guarantee against water leakage).

The innovative modern techniques have changed the face of swimming pool Industry by eliminating,

- **Plant Room and Pump Room**
- **Balancing Tank**
- **Complicated Plumbing lines**

These technologies also eliminate common problems faced by traditional pool, such as water leakage due to cracks in the structure, and maintenance issues raised by buried piping for water filtration. By virtue of our specialization in this commitment, the client is guaranteed as always with a Quality and Professionalism in terms of execution and finishing.





## Make a pool

"THE STRUCTURE" Combining Polypropylene and concrete

The in-situ permanent polypropylene injected panels make the construction of pool structure easy and fast in any shape and size. \*10 years guarantee against deformation of structure.



Marking the pool



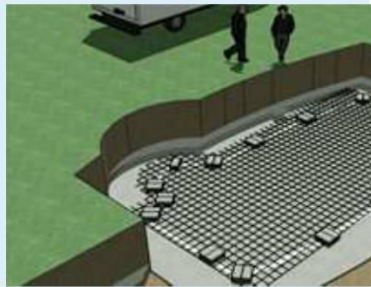
Setting out the pool after excavation and earth works



PCC on pool bed



Marking the pool



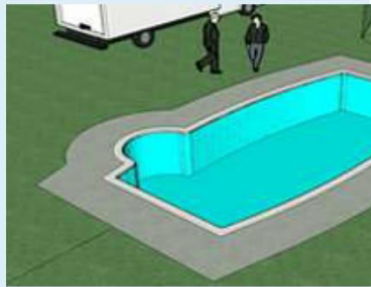
Reinforcement work for the base slab and side walls



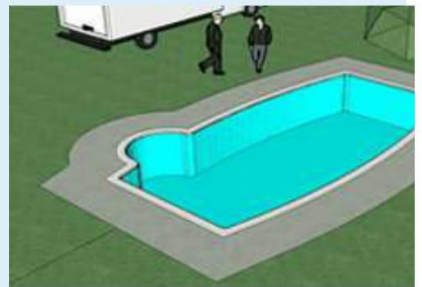
Fabrication and erection of the in-situ active casing panels up to monolithic casting of base slab and side wall



Marking the pool



Liner fuse welding, installation of filter unit, filling of water and commissioning the pool



Marking the pool

## MAINTENANCE



We have years of experience in construction and maintenance of indoor and outdoor swimming pools, from simple pump and filters to complex plant rooms. Our technical team will visit your pool, weekly once, twice thrice or in every day considering your requirement as well as considering the behavioral aspects of your pool. In maintenance we are following sustainable approach to make your pool "live". The innovative methods that we developed will bring you a professional touch throughout in our service.

Our service will cover the pool area, deck, surface, pool walls, and bottom, pump room, filters, basket, strainer and each and everything attached to the pool. Our sophisticated and professional approach enables your pool chemically balanced and hygiene. Expert, experienced and well qualified technicians from around the world are ready to serve you every time by giving proper care, advise and support.

Health and hygiene are the important topics discussed around the world, and in this scenario, our swimming pools are maintained with good water chemistry. Our efficient team will regularly check the residual chlorine level, Alkalinity and pH level and we will maintain the proper levels for keeping your pool water biologically safe.

## STEAM BATH



For centuries men indulged in steam bath for a relaxing and healthy experience. The traditional methods of medicine across the world prescribes steam bath as an effective method for opens pores, soothes sore muscles, increases blood circulation.

Now, our modern technology has enabled the installation of efficient, carefully controlled baths at spas, fitness centers, meditation rooms, and in personal residences. Our technically advanced and professionally efficient concepts and installation procedures will keep the room in a narrow range of optimum temperature for humans, around 112° F (44°c) that raises our body temperature without causing overheating.

Our modern heat balancing system enables the circulating air as refresh, so the humidity remains near saturation for maximum benefits.

## SAUNA



We are well equipped with our advanced methods for installing a SAUNA with infrared heaters. The technology allows us to maintain the heat to the humans, but it never heat up the room. Our concept of building Sauna, preferably an inside one, attached to your bathroom. It will help you to use the room throughout the year. The installation process is a speedy one, and very cost effective. Considering the changes in the living habitat, most men are affected by serious health.







# INTRODUCTION

MOOVWALL is designed to match with the specific requirements by providing solutions to create, adjust and use space effectively. Even though the concept derived from the traditional partitions; the need for more space and the need for effective use of space in modern era architecture creates the room for moovwall.

Facilitating a quite ambiance in a noisy school / creating a confidential conference room in a business environment / arranging gathering rooms or dining hall or a theatre for a group in a hotel or a convention centre are the needs of the present society, where we successfully installed our walls for creating convenience for uniting minds.

We are a quality certified company and believe in offering best quality products to our esteem clients worldwide. We have our own quality management system to ascertain and monitor the activities from customer interaction to customer satisfaction. From the period of innovation we believe in the concept of obligatory fulfilment from the services we are offering. We have a dedicated customer service team for providing the maximum support at all levels of customer interaction. We offer a comprehensive solution for the customized needs that ensure a competitive price. All our products and services are eco friendly that we always upholds our love and gratitude towards nature



# QUALITY ASSURANCE

We are committed to the provision of services that meet the customers specified and anticipated needs and expectations and comply with all statutory, regulatory, legal and other requirements. In particular the Company recognises that its activities are directed towards enhancing the environment and preventing pollution. The Company therefore takes into account the effects on the environment of all of its actions wherever it operates, and works to match the rising expectations of a cleaner, safer, healthier environment.

The Company is committed to continually improve the effectiveness of its management systems.

This will be achieved by:

Measuring and analysing the company's performance in terms of conformity of the services delivered to specified and legal requirements;

Assessing customer satisfaction; and

The Board of Directors holding management reviews of the effectiveness of the quality management system to a pre-determined schedule.

The management reviews will ensure that those resources that are necessary for product and service conformance are made available and will assess the continued relevance of this policy.

All Directors are responsible for communicating this policy and its principles to their staff including the contents of the procedures adopted to ensure that the Company maintains the quality of products and services. Staff will be encouraged to contribute to the continued development and improvement of the management system and the products and services.



## SOME OUR RECENT PROJECTS WORLD WIDE



SHANGRI LA  
HOTEL -  
SINGAPORE



HYATT REGENCY  
-TORRONT



INTERNATIONAL  
CONVENTION  
CENTRE



ULTRA HIGH  
FIELDS -  
YORKSHIRE



WHARTON  
BUSINESS  
SCHOOL



BAY BEACH  
RESORT – ST LUCIA

## PROJECTS IN QATAR



HOTEL GRAND HYAT –  
WEST BAY QATAR



QATAR  
ECONOMIC  
ZONE 1 & 3



INTERCONTINENTAL  
HOTEL KATARA



HAMAD MEDICAL  
CORPORATION - DOHA



# Interior & Painting

## Division



- *ELECTRICAL*
- *FLOORING & CEILING*
- *PARTITION*
- *BOARD ROOMS & RECEPTION*
- *PANELING & FURNISHING*
- *WOOD POLISHING*
- *INDUSTRIAL PAINTING*
- *INTERIOR PAINTING*
- *EXTERIOR PAINTING*
- *TEXTURE PAINTING*
- *KIDS ROOM PAINTING*





NEWMOON , The Interior furnisher in Qatar is a professionally managed company which has been in the field of interior design, renovation works, interior decorates, consulting. We offer a different style and innovative approach in our design concepts and solutions. Whether designing the interior of an office space, hotel, restaurant, new build or existing home, our experience and attention to detail proves invaluable to the client.

Company undertaking the following services

## Ceiling

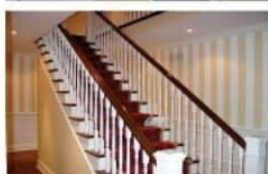
*We serve you the best of our designs in ceilings like Gypsum Ceiling, POP ceilings, Armstrong and Aluminum Ceilings. Office Equipment have been installing quality suspended ceilings for over thirty years. We employ our own dedicated team of installers to ensure quality throughout.*

## Flooring

*Wooden Flooring, PVC Flooring, Italian Marble Flooring, Raised Flooring, Vitrified tiles is more than just a decorating decision. It's a natural choice. Wooden floors and laminated hardwood floors are environmentally friendly. Plus hardwood flooring can improve the environment within your home because it does not trap dust, pollen and other allergens.*

## Electrical

*Light is an insubstantial medium but it has an enormous influence on both perception of physical spaces and upon the emotional response of those who enter work or shop in these environments. Whether it is a Hotels, Restaurants, Offices, Residence, Banks, Showrooms and Hospitals each project is evaluated for its unique creative opportunity. The design intent is to create the proper environment by integrating the use of concealed light sources, natural light and decorative fixtures. The careful integration of a collective design concept in every project means that we realize the projects and clients expectations.*







## Partition

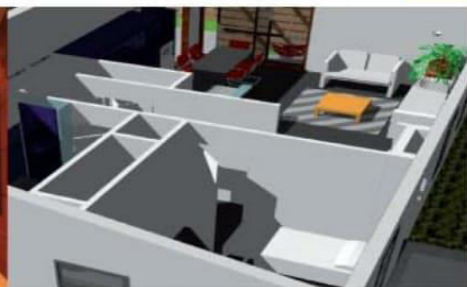
Partitions can vary from the best of requirement as *low height partition, Full Height Partition, Fully Glazed Partition and Half Glazed Partition*. Office Equipment design and install office partitions to match your requirements. From stable, portable office partitions to the very latest in tiled office flooring, your workplace will be transformed at a budget that suits you. Our service offer fixed and fully de-mountable range of partitioning and curtain walling, Solid panels half glazed and fully glazed systems installed, straight line curved partitions in solid panel and glass systems install, in house design service for manufactures systems by dedicated installation teams.

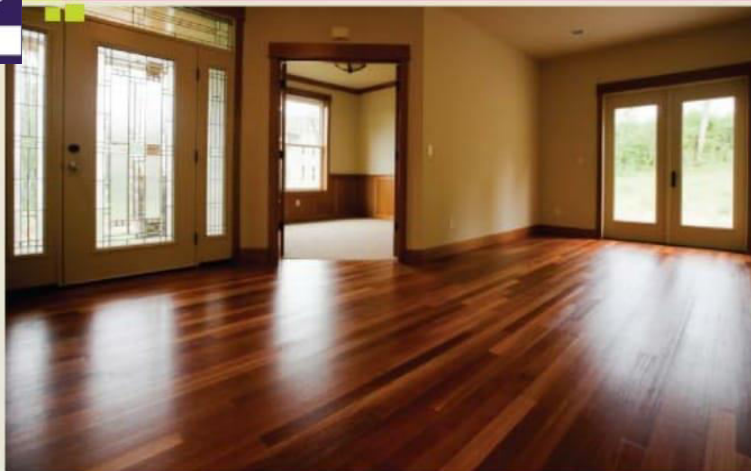
## Board Rooms & Receptions

We have unlimited range of boardrooms ideas and designs. Receptions can vary from the best of requirement. Office Equipment design and created Receptions to match your requirements. We have all the latest designs and elegance your first impression reception

## Special features in Partitions:

Movable Walls, Gypsum Partitions, Sliding Folding Partitions, Operable & Movable Walls, Acoustic sliding, Folding Partition, Acoustic Movable Partition





## Paneling

*We have best Designs for the paneling in living rooms, dining rooms, libraries, family rooms, bedrooms, entry foyers, and along staircases. Office Equipment wooden panels represent a major advance over custom-built paneling systems. The system can be easily installed and is approximately one-third the cost of custom mill work. The Paneling System is ideal for commercial applications as well as residential applications. It is used in restaurants, social clubs, offices, conference rooms, lobbies, and waiting rooms*

## Furnishing

*We offer office furniture product lines, giving a greater choice than ever before and combining quality, functionality and style. As high quality office furniture suppliers, our catalogue shows tangible evidence of the importance we attach to making customer choice as enjoyable and straight forward as possible.*







## INTERIOR & EXTERIOR PAINTING

*The beauty of buildings will stand out with its interior and exterior paint. Our top Quality paints give better protection and long lasting beauty. Colours give the essential character to any space-be it living room or kitchen, bedroom or lounge. We help you achieve striking effects using the right colours to create interiors that give a neutral elegance, be it timeless eternal shades that infuse glamour or refined trendy and vibrant colours, we paint to create an ambiance of wide spaces that offers a balance to each room.*

### Services

- FULL INTERIOR & EXTERIOR PAINTING (ANY HEIGHT)
- LOW-VOC AND NO-VOC PAINT PRODUCTS
- DRYWALL & PLASTER REPAIR
- MURALS
- WALLPAPER REMOVAL & INSTALLATION
- ELASTOMERIC COATINGS
- PLURAL COMPONENTS
- GRAFFITI CONTROL COATINGS
- URETHANE & EPOXY COATINGS
- EXTERIOR MURALS
- WOOD FINISHING
- HIGH PRESSURE WASHING
- STRIPPING & REFINISHING
- PARKING LOT & AISLE STRIPING
- WATERPROOFING
- AULKING & SEALANTS





## INDUSTRIAL PAINTING

*As a fully-equipped, experienced commercial painting contractor, NEWMOON has the company infrastructure to provide all of the following services:*



### Services

- EPOXY FLOOR COATINGS
- WATERPROOFING & DAMP-PROOFING
- PAINTING BLOCK, BRICK,
- CONCRETE, DRYWALL & PLASTER
- STRUCTURAL STEEL PAINTING
- CORROSION CONTROL
- RUST ENCAPSULATION
- ELASTOMERIC COATINGS
- POWER WASHING
- URETHANE COATINGS
- STRIPPING & REFINISHING WOODWORK
- GRAFFITI REMOVAL
- CONCRETE FINISHING

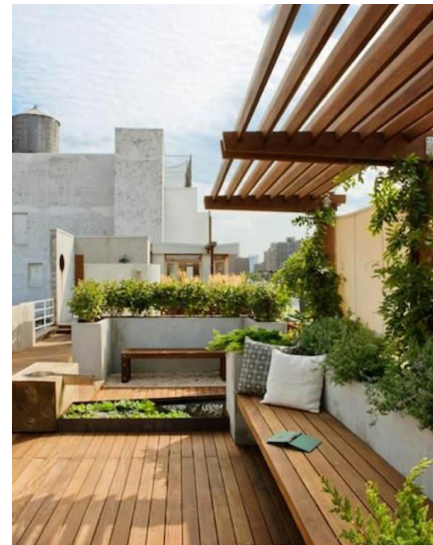
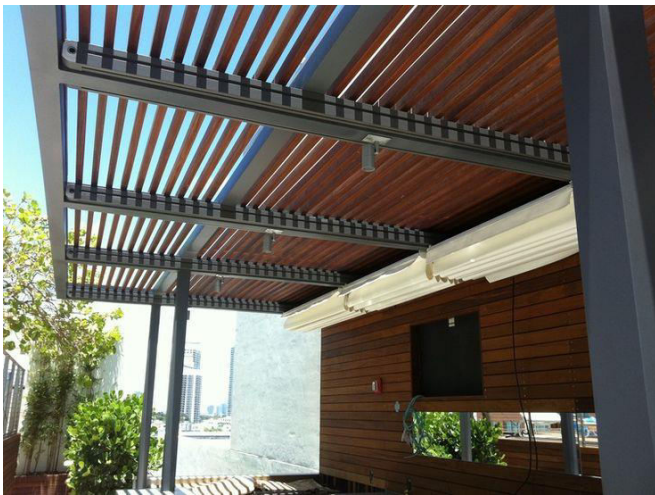


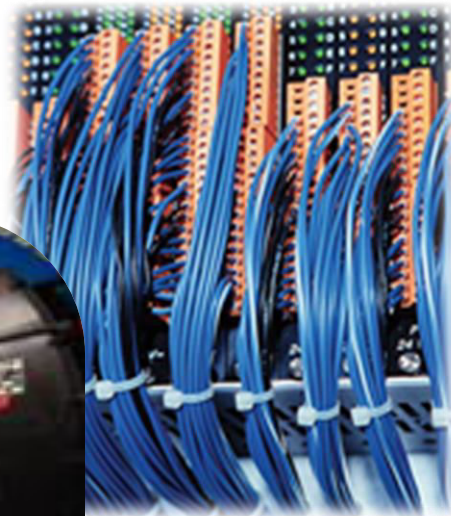
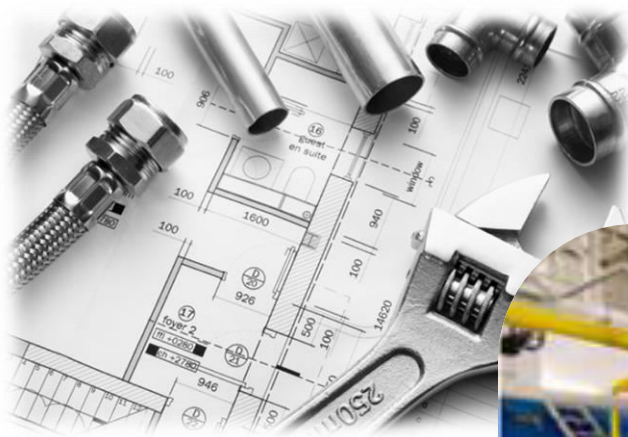


## WOOD POLISHING (Interior & Exterior)

❖ *Decorative and Protective Coating on wood surfaces especially on furniture.*

❖ *Coating helps wood surfaces easier to clean and preserve the properties of wood, like tone and hardness in elegant appearance.*









# ELECTRICAL

- **INSTALLATION & MAINTENANCE OF COMPLETE ELECTRICAL SYSTEMS FOR COMMERCIAL, INDUSTRIAL AND RESIDENTIAL COMPLEXES.**
- **INSTALLATION OF MDB, SMDB AND ALL TYPES OF PANEL BOARDS**
- **CABLE LYING & TERMINATION**
- **HV AND LV POWER AND CONTROL CABLING.**
- **CONDUIT WIRING**
- **CCTV, TELEPHONE, DOOR ACCESS AND SECURITY SYSTEMS.**



# MECHANICAL & PLUMBING

- **DESIGN AND SUPERVISE PLUMBING RELATED WORKS**
- **INSTALLATION & MAINTENANCE OF WASTE WATER LINE, FLOOR TRAP, CLEAN OUTS, FLOOR DRAIN, GULLY TRAP, BOTTLE TRAP, TRAP MANHOLE**
- **INSTALLATION & MAINTENANCE OF HOT AND COLD WATER LINE WITH NECESSARY FITTINGS**
- **WATER TANK INSTALLATION & MAINTENANCE**
- **PUMPS & VALVES INSTALLATION & MAINTENANCE**
- **AIR CONDITIONING AND VENTILATION**





*POWER CABLES*



*SWITCHES AND LIGHTS*



*CABLE MANAGEMENT SYSTEM*



*ELECTRICAL ACCESSORIES*



*ENCLOSURES*



*SAFETY EQUIPMENTS*



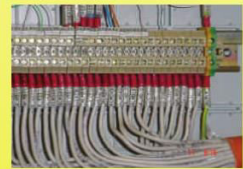
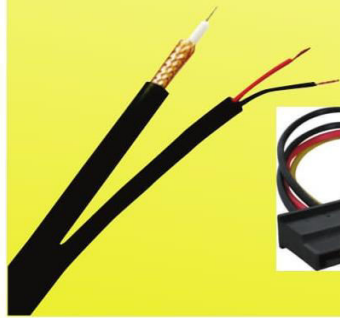


نيومون للتجارة المقاولات ل.ل.س  
**NEWMOON**  
TRADING & CONTRACTING L.L.C

AN ISO 9001 : 2008 CERTIFIED COMPANY

## POWER CABLES

*U.G. Power and wiring Cables,  
Fiber Optic and Network Cables,  
Telephone Cables,  
RF, Instrumentation and Controll Cables*



## SWITCHES & LIGHTS

*Electrical Switches and Sockets  
Room and Industrial Lights  
Metal Halide and Store Lighting  
Industrial Switches and Sockets*







نيومون للتجارة والمقاولات ل.ل.م.س

**NEWMOON**

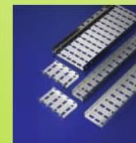
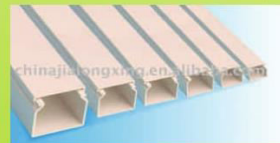
TRADING & CONTRACTING L.L.C

AN ISO 9001 : 2008 CERTIFIED COMPANY

## CABLE MANAGEMENT SYSTEM



*Cable Tray,  
Cable Ladder  
PVC and GI Trunking  
GI Conduites  
Steel and PVC Cable Ties*



## ENCLOSURES

*I.P. 65 Sheet Steel Enclosures and  
Various types of G.I and PVC Boxes*



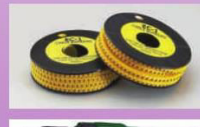


نيومون للتجارة المقاولات ل.ل.س  
**NEWMOON**  
TRADING & CONTRACTING L.L.C

AN ISO 9001 : 2008 CERTIFIED COMPANY

## ELECTRICAL ACCESSORIES

*All type of Wiring Accessories  
Cable Markers and Insulated Connectors  
PVC and GI Conduits and Boxes  
Power and Non Power Connectors  
Power and Non Power Tools  
Hand Tools*



## SAFETY EQUIPMENTS

*We are dealing with all safety equipment and PPE including gas detectors, harnesses protective clothing, safety shoes, gloves, helmet, ensembles etc. for all kinds of Industry.*





## OUR VENDORS

Brand	Name	Country	Product Details	Product View
	Ardic	Turkey	Cable Management System Raised and Under Floor Cable Ladder	
	Raychem	USA	Stainless Steel PVC coated Cable Ties	
	Swilite	Malaysia	Electrical Allied Accessories, Fluorescent Lamps, CFL Lightings, Cable Ties, G.I, Flexible Conduits and Adaptors	
	BG	Hong kong	Switches Electrical Accessories	
	T&G	UK	Electrical Switches, Light Management Systems, Infrared Dimming System, Etc;	
	Nuhas	Oman	Power Cable, Under Ground, Instrumentation and Control	
	SM Cables	Malta	Power/Network Telephone Cables	
	Clipsal	Australia	Power/Network Telephone Cables	
	Finolex	India	Power/Network Telephone Cables	
	Belden	USA	Network, RF, Instrumentation and Control Cables	
	Pierlite	Australia	Electrical Lighting, Conduits and Data com Products	
	Wilco	Australia	Electrical Lighting, Conduits and Data com Products	



نيومون للتجارة المقاولات ل.ل.م.س  
**NEWMOON**  
 TRADING & CONTRACTING L.L.C

AN ISO 9001 : 2008 CERTIFIED COMPANY

## OUR VENDORS

Brand	Name	Country	Product Details	Product View
	Clipsal	Australia	Electrical Lighting, Conduits and Data com Products	
	Scame	Italy	Electrical components for domestic and similar applications	
	Tibox	China	Metal & Steel Enclosures	
	ATX - France	Italy	Electrical Explosion Proof Switches	
	CEAG Cooper	France	Electrical Explosion Proof Switches	
	Kopos	Czech Republic	Multi Compartment PVC Trunking	
	Ridgid	USA	Powered and Non Powered Tools	
	De-Walt	Japan	Powered and Non Powered Tools	
	Makita	Japan	Powered and Non Powered Tools	
	Drapper Tools	UK	Hand Tools	
	CAT	USA	Safety Shoes/Helmet and Coveralls	
	Nomex	USA	Safety Shoes/Helmet and Coveralls	
	Redwing	USA	Safety Shoes/Helmet and Coveralls	
	Molykote	USA	Industrial Lubricating Fluids	





نيومون للتجارة المقاولات ل.ل.س

**NEWMOON**

TRADING & CONTRACTING L.L.C

AN ISO 9001 : 2008 CERTIFIED COMPANY



ABDULGHANI & CARDAHI	SIMPLEX INFRASTRUCTURE
AL KHAMEES GLASS FACTORY	UTOPIA PROPERTIES
ALMANA REAL ESTATE	WHITE YOUNG
CFE MIDDLE EAST	BRAVO HEALTH CARE LTD
DEEBLE TOWER	CENTRAL BANK OF INDIA
DEPARTMENT OF PUBLIC GARDENS	CIDCO MASS HOUSING SCHEME
GULF MALL	FISAT ENGINEERING COLLEGE
(IMPERIAL TRADING & CONTRACTING CO. (ITCC	GRANT HYATT
(INTERNATIONAL DEC. & CONT. CO. (IDC	GULF OIL CORPORATION
JAMCO	HDIL
KHARAMA	HILL PARK
LUSAIL CITY - QTEL EXCHANGE	LAND MARK
MARCO GROUP	(LIFE INSURANCE CORPORATION (LIC
MASEED INDUSTRIAL CITY	MAGAPATTA CITY
MEDIHERB	.MASTEK LTD
MIC LABOUR ACCOMODATION	NINA CONCRETE
.MIDAS INTERNATIONAL CO	NIRMAL LIFESTYLE SHOPPING MALL
MINISTRY OF MUNICIPALITY URBAN PLANNING	.OWENS CORNING (I) LTD
NASSER BIN ABDULLAH AL-ATTIYA	PARK HILL
INDEPENDENT SECONDARY SCHOOL	.RELIANCE INFOCOMM ENGG. PVT. LTD
PAT CONSTRUCTION	RESERVE BANK OF INDIA
POLLODIES	RYAN INTERNATIONAL SCHOOL
POULLAIDES COSTRUCTION CO. LLC	SAIFEE HOSPITAL
QATAR FOUNDATION	STATE BANK OF BIKANER & JAIPUR
QATAR PETROLIUM	(UB GROUP (KINGFISHER
SHAHANIYA PARK	VOLTAS



نيومون للتجارة المقاولات ل.ل.س  
**NEWMOON**  
TRADING & CONTRACTING L.L.C

AN ISO 9001 : 2008 CERTIFIED COMPANY

# PROJECT REFERENCES





## PROJECT TEAM

MANAGER  
OPERATIONS

PROJECT  
MANAGER

QA/QC

PROCUREMENT  
ENG

SITE  
ENGINEER

DOCUMENT  
CONTROL

STORE  
KEEPER

PROJECT  
ENGINEER

COORDINATOR

SUPER  
VISOR

FOREMAN

TIME  
KEEPER

HEALTH & SAFETY  
ENGINEER

FIRST  
AIDER

SUPER  
VISOR



نيومون للتجارة والمقاولات ل.م.س

**NEWMOON**  
TRADING & CONTRACTING L.L.C

AN ISO 9001 : 2008 CERTIFIED COMPANY



## QATAR GAS TOWER

**Scope of Work : WATERPROOFING**

**Client : QATAR GAS**

**Consultant : AI-MILAHA**

**Main Contractor : AL MIRQAB**

### Products







نيومون للتجارة المقاولات ل.م.س

**NEWMOON**

TRADING & CONTRACTING L.L.C

AN ISO 9001 : 2008 CERTIFIED COMPANY



## PORTO ARABIA WALKWAY- THE PEARL QATAR

**Scope of Work : Epoxy Coating**

**Client : UDC**

**Products**





نيومون للتجارة والمقاولات ل.م.س

**NEWMOON**

TRADING & CONTRACTING L.L.C

AN ISO 9001 : 2008 CERTIFIED COMPANY



## REFURBISHMENT OF PERGOLA – THE PEARL QATAR

Scope of Work : Repair & Re-polishing of wooden pergola

Client : UDC

Products







نيومون للتجارة والمقاولات ل.د.م.  
**NEWMOON**  
TRADING & CONTRACTING L.L.C

AN ISO 9001 : 2008 CERTIFIED COMPANY



## **Lusail Multi Purpose Hall (stadium) Lusail- Doha - Qatar**

<b>Scope of Work</b>	<b>: Crystalline Waterproofing to Water tanks : Crack Injection Polyurethane Elastomeric waterproofing to Steam Rooms &amp; Sauna</b>
<b>Client</b>	<b>: QATAR OLYMPIC COMMITTEE</b>
<b>Project Management Consultant</b>	<b>: ASTAD : KEO</b>
<b>Main Contractor</b>	<b>: CONSOLIDATED CONTRACTORS GROUP (CCC)</b>

### **Products**





نيومون للتجارة والمقاولات ل.ل.م.س

**NEWMOON**

TRADING & CONTRACTING L.L.C

AN ISO 9001 : 2008 CERTIFIED COMPANY



## Ministry Of Interior Head Quarters Doha-Qatar

**Scope of Work** : Interior Painting & Waterproofing

**Consultant** : ARAB ENGINEERING BUREAU

**Main Contractor** : FINO INTERNATIONAL WLL

### Products







نيومون للتجارة والمقاولات ل.ل.م.س

**NEWMOON**

TRADING & CONTRACTING L.L.C

AN ISO 9001 : 2008 CERTIFIED COMPANY



## **Under Pass Pearl Qatar Doha-Qatar**

**Scope of Work : Crack Injection  
Waterproofing & Landscaping**

**Products**





نيومون للتجارة والمقاولات ل.ل.م.ش

**NEWMOON**

TRADING & CONTRACTING L.L.C

AN ISO 9001 : 2008 CERTIFIED COMPANY



## State Audit Bureau Head Quarters West Bay,Doha-Qatar

- Scope of Work** : Interior & Exterior painting  
: Waterproofing  
: Epoxy coating  
: Crack Injection
- Client** : SEG SOCIÉTÉ D'ENTREPRISES & DE GESTION

### Products

**BERGER**



Original  Company  
AWAZEL

**BASF**  
The Chemical Company





## LAGOONA MALL WEST BAY, DOHA-QATAR

Scope of Work	: Epoxy Coating to Car Park
Client	: DHARWISH HOLDINGS
Project Management	: CBM
Consultant	: CBM
Main Contractor	: NEWMOON TRADING & CONTRACTING LLC

### Products



# HEMPEL



## **FIRE HOUSE ARTIST IN RESIDENCE DOHA-QATAR**

Scope of Work	: Exterior & Interior Painting Epoxy Coating to Floor
Client	: QATAR MUSEUMS AUTHORITY
Project Management	: ASTAD
Consultant	: ARAB ENGINEERING BUREAU
Main Contractor	: URBACON TRADING & CONTRACTING

Products

**BERGER**







## SABBAN TOWER - PEARL QATAR

Scope of Work	: Exterior & Interior Painting Epoxy Coating to Floor
Client	: SABBAN TOWER
Project Management	: CBM
Main Contractor	: NEWMOON TRADING & CONTRACTING

### Products





## INTEGRATED PAPER PRODUCT FACTORY NEW INDUSTRIAL AREA, QATAR

Scope of Work : Epoxy Coating to Floor

Project Management : TELUS  
Main Contractor : HAMTON INTERNATIONAL

Products





## **CAMBRIDGE SCHOOL MAMOURA - DOHA, QATAR**

Scope of Work : Epoxy Coating to Floor

Client : CAMBRIDGE SCHOOL  
Project Management : TELUS  
Main Contractor : NEWMOON TRADING & CONTRACTING LLC

Products







## **KAHRAMAA SUBSTATION AL WAJBA- DOHA-QATAR**

Scope of Work : Interior Painting  
Epoxy coating to Floor

Client : KAHRAMAA  
Main Contractor :SIMPLEX INFRASTRUCTURES

Products





## **QATAR ECONOMIC ZONE 1 & 3 DOHA-QATAR**

Scope of Work : Supply & Installation of Moovwall  
Movable Acoustic Partitions

Consultant : ARAB ENGINEERING BUREAU  
Main Contractor : UCC

Products





## INTERCONTINENTAL HOTEL KATARA

Scope of Work : Supply & Installation of Movable Partition

Client : INTERCONTINENTAL  
 Main Contractor : NEWMOON TRADING & CONTRACTING LLC

Products







## HAMAD MEDICAL CORPORATION

Scope of Work : Supply & Installation of Movable Partition

Client : HAMAD MEDICAL CORPORATION  
Main Contractor : NEWMOON TRADING & CONTRACTING LLC

Products





نيومون للتجارة المقاولات ل.ل.م.س  
**NEWMOON**  
TRADING & CONTRACTING L.L.C

AN ISO 9001 : 2008 CERTIFIED COMPANY



**ONGOING PROJECTS**

## List of On going Projects

**1**

<b>Project</b>	<b>UDC-WATER TANK</b>
<b>Client</b>	<b>UDC,THE PEARL QATAR</b>
<b>Scope of Work</b>	<b>MEP &amp; WATERPROOFING</b>

**2**

<b>Project</b>	<b>SHEIKH VILLA</b>
<b>Client</b>	<b>UDC</b>
<b>Scope of Work</b>	<b>MEP ,WATERPROOFING,CIVIL WORK</b>

**3**

<b>Project</b>	<b>UCC - MOOVWALL</b>
<b>Client</b>	<b>UCC</b>
<b>Scope of Work</b>	<b>MOVABLE PARTITION</b>



## List of On going Projects

**4**

<b>Project</b>	<b>VALVE CHAMBER</b>
<b>Client</b>	<b>UDC,THE PEARL QATAR</b>
<b>Scope of Work</b>	<b>MEP &amp; CIVIL</b>

**5**

<b>Project</b>	<b>SPECTRA EPOXY</b>
<b>Client</b>	<b>SPECTRA ARTS LLC</b>
<b>Scope of Work</b>	<b>EPOXY COATING</b>

**6**

<b>Project</b>	<b>SPAR HYPER MARKET</b>
<b>Client</b>	<b>RUMAILLAH</b>
<b>Scope of Work</b>	<b>EPOXY COATING &amp; WATERPROOFING</b>

## List of On going Projects

**7**

<b>Project</b>	<b>FITNESS CENTRE - UMSALAL</b>
<b>Client</b>	<b>TRIPLO</b>
<b>Scope of Work</b>	<b>WATERPROOFING</b>

**8**

<b>Project</b>	<b>AL MANA MAPLES-KATARA MARINE RESTAURENT</b>
<b>Client</b>	<b>ALMANA MAPLES</b>
<b>Scope of Work</b>	<b>WATER PROOFING</b>

**9**

<b>Project</b>	<b>MELITA – EZDAN HOTEL CONVENTION CENTRE</b>
<b>Client</b>	<b>MELITA HOSPITALITY SOLUTIONS</b>
<b>Scope of Work</b>	<b>MOVEBALE PARTITION WALL</b>



**COMPLETED PROJECTS**



# List of Successfully Completed Projects



## **WATERPROOFING WORKS – QATAR GAS TOWER**

Client	QATAR GAS
Scope of Work	WATER PROOFING
Year	2016-2017



## **REFURBISHMENT OF PERGOLA**

Client	UDC, PEARL QATAR
Scope of Work	WOOD REPAIR & REPOLISHING
Year	2017



## **INTERCONTINENTAL**

Client	HOTEL INTERCONTINENTAL
Scope of Work	MEP & CARPENTRY
Year	2016-2017

# List of Successfully Completed Projects



## **WATERPROOFING WORKS – EZDAN OASIS**

Client	SAK TRADING & CONTRACTING
Scope of Work	WATER PROOFING
Year	2016-2017



## **WATERPROOFING WORKS – CASA 28**

Client	UDC, PEARL QATAR
Scope of Work	WATER PROOFING
Year	2017



## **WATERPROOFING WORKS – SILMAR VILLA**

Client	SILMAR TRADING & CONTRACTING
Scope of Work	WATER PROOFING
Year	2017

# List of Successfully Completed Projects



## **METITO – QATAR COOL**

Client	UDC,THE PEARL QATAR
Scope of Work	MEP,EPOXY,CIVIL WORKS
Year	2016



## **MALL OF QATAR**

Client	POULLAIDES
Scope of Work	EPOXY COATING
Year	2016



## **PORTO ARABIA BROAD WALKWAY**

Client	MADINA INNOVA
Scope of Work	EPOXY COATING
Year	2016



# List of Successfully Completed Projects



## **INTERCONTINENTAL-KATARA**

Client	HOTEL INTERCONTINENTAL
Scope of Work	MOVABLE PARTITION
Year	2016



## **AL BAYRAQ OFFICE BUILDING**

Client	AL BAYRAQ
Scope of Work	CIVIL WORK
Year	2016



## **PARAGON WARE HOUSE**

Client	PARAGON
Scope of Work	EPOXY COATING
Year	2016

# List of Successfully Completed Projects



## **FIRE STATION**

Client	KCT
Scope of Work	PAINTING & EPOXY COATING
Year	2015



## **QATAR ECONOMIC ZONE 1&3**

Client	UDC
Scope of Work	MOVABLE PARTITION WALL
Year	2015



## **AUDIT BUREAU**

Client	SEG SOCIÉTÉ Ď ENTERPRISES & DE GESTION
Scope of Work	PAINTING & EPOXY COATING
Year	2014-2015

# List of Successfully Completed Projects



## **LUSSAIL MULTI PURPOSE HALL (STADIUM)**

Client	QATAR OLYMPIC COMMITTEE
Scope of Work	CRACK INJECTION & WATERPROOFING
Year	2014-2015



## **MINISTRY OF INTERIOR HEAD QUARTERS**

Client	ARAB ENGINEERING BUREAU
Scope of Work	INTERIOR PAINTING
Year	2014-2015



## **UNDERPASS-PEARL QATAR**

Client	UDC
Scope of Work	CRACK INJECTION, WATERPROOFING & LANDSCAPING
Year	2015



# List of Successfully Completed Projects



## **NDIA**

Client	NEW DOHA INTERNATIONAL AIRPORT
Contractor	CEM ESTERO S.P.A
Scope of Work	CRACK INJECTION & CIVIL WORK
Year	2014-2015



## **AL-EMADI PROJECT (TYRE & EQUIPEMENT CENTRE)**

Contractor	MIDAS INTERNATIONAL CO
Scope of Work	INTERIOR WORK
Year	2014



## **UPGRADE OF VENDOR EXHAUST SYSTEM, STUDENT CENTRE**

Client	QATAR FOUNDATION
Contractor	UNITED CONTRACTING FOR EMAC
Scope of Work	CIVIL WORK
Year	2013

# List of Successfully Completed Projects



قطر للبترول  
Qatar Petroleum

## EPIC COVERED STORAGE @ DUKHAN FIELD

Client	QATAR PETROLEUM
Contractor	SEASHORE SANATHAN
Scope of Work	EPOXY COATING
Year	2013



## GULF MALL

Client	INTERNATIONAL DEC & CONT CO.
Scope of Work	EPOXY COATING
Year	2013



## MADINA KHALIFA STRUCTURAL STEEL

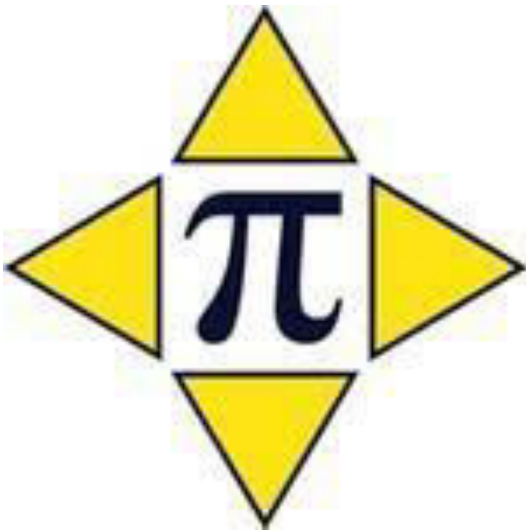
Client	AL BALAGH TRADING & CONTRACTING COMPANY
Scope of Work	EPOXY COATING
Year	2012

# List of Successfully Completed Projects



## WAKRA BOYS SCHOOL

Client	ABDUL RAHMAN BIN JASSIM PREPARATORY SCHOOL
Scope of Work	EPOXY COATING & PAINTING
Year	2012



## MIC HEALTH CENTRE

Client	POULLAIDES CONSTRUCTION CO. L.L.C.
Scope of Work	EPOXY COATING & PAINTING
Year	2012



## EZDAN

Client	EZDAN TRADING & CONTRACTING
Scope of Work	EPOXY COATING
Year	2012



# COMPANY DOCUMENTS

## INDEX

- COMMERCIAL REGISTRATION CERTIFICATE
- ISO CERTIFICATE



وزارة الاقتصاد والتجارة  
Ministry of Economy and Commerce

Registration and Commercial  
Licenses Department

إدارة التسجيل  
والتراخيص التجارية

مستخرج ببعض بيانات السجل التجاري

2017/03/28



رقم التسجيل الضريبي:	49640	رقم السجل التجاري:	49640
السمعة التجارية:		الأسم التجاري:	
تاريخ انتهاء السجل:	17/03/2018	تاريخ انشاء السجل:	17/03/2011
رأس المال:	200000	الشكل القانوني:	شركة ذات مسؤولية محدودة
جنسية المنشأة:	قطر	حالة السجل:	نشط
		عدد الفروع:	1

معلومات الاتصال

أرقام الاتصال: 55003376/33435031 صندوق البريد: 82514

الشركاء

الأسم	رقم الإثبات	رقم السجل	الجنسية	النسبة	الحالة
حمد جاسم علي جاسم الجلاي	29363400146		قطر	51	نشط
شاجي اينامتوروتيل يوسفخان	7170750		الهند	49	نشط

المدراء (المخولون بالتوقيع)



1 of 2

رقم السجل : 49640



تشهد غرفة تجارة و صناعة قطر بان المنشأة المذكورة اعلاه سجلت اتماما

Qatar Chamber certifies that the above mentioned establishment has been registered





وزارة الاقتصاد والتجارة  
Ministry of Economy and Commerce

Registration and Commercial  
Licenses Department

إدارة التسجيل  
والتراخيص التجارية

مستخرج بعض بيانات السجل التجاري

الصفة (الملاحية)	الجنسية	رقم السجل	رقم الإثبات	الأسم
صلاحيات كاملة ومطلقة - مدير	قطر		29363400146	حمد جاسم علي جاسم الجلابي
صلاحيات كاملة ومطلقة - مدير	الهند		28535640068	نزار شمسدين
- مدير	الهند		7170750	شاجي اينامتوروتيل يوسفخان

الفروع

حالة الفرع	رقم السجل للفرع	اسم الفرع	الرقم التسلسلي
نشط	49640/1	النيل السريع الاوسط للتجارة	1

الأنشطة التجارية

اسم النشاط	الرقم
انشاءات عامه (مقاولات عامه)	452000
تنظيفات عامة	901060

اسم النشاط	الرقم
تجارة مواد البناء	537000
اعمال تنفيذ التصميم الداخلي	2000961
اعمال تركيب العوازل ضد المياه والحراره والصوت	456100



2 of 2  
رقم السجل : 49640



تشهد غرفة تجارة و صناعة قطر بان المنشأة المذكورة اعلاه سجلت لديها  
Qatar Chamber certifies that the above mentioned establishment has been registered



## NEW MOON TRADING & CONTRACTING W.L.L.

Building No.1, Room No.17, Zone 90,  
Sheikh Abdul Rahman Bin Jassim Street,  
Opp. Commerical Bank, Al Wakra, Qatar

This certificate verifies that the above Organisation has been audited on the above address for scope as under  
and found to be in accordance with the requirements of Management system.

# ISO 9001:2008

## Quality Management System

Interior Design, Fit-outs & Movable Partitions,  
Water Proofing, Construction & Maintenance of  
Swimming Pools, Coating including Painting & Epoxy

Certificate No: **Q-02160229**

Original Issue Date: **29 Feb 2016**

Issue Date: **29 Feb 2016**

1<sup>st</sup> Surv. Due before: **15 Jan 2017\***

2<sup>nd</sup> Surv. Due before: **15 Jan 2018\***

Valid Till: **14 Sep 2018**

**\* After successful completion of surveillance audit, new certificate shall be issued.**

This Certificate is valid as per Rules and Regulations of ECL & also the surveillance audits conducted atleast once a year.  
To check the certification validity please contact -[info@theecl.com](mailto:info@theecl.com)



  
Director

## Equalitas Certifications Limited

Accreditation by Joint Accreditation System of Australia and New Zealand (Accreditation No. M4410210II) FECCA House, 4 Phipps Close, Deakin, ACT 2600, Australia

Rev: 15

[www.theecl.com](http://www.theecl.com)